

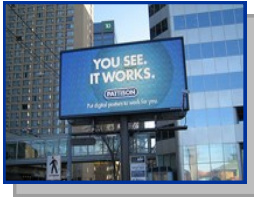
Electronic Signs

Electronic Message Signs with a static message shall not change more than once every 5 seconds and the message in its entirety must change within one second.



Electronic Message Signs with scrolling messages shall scroll the entirety of the message within 3 seconds. No portion of the message shall blink or flash.

Digital Signs shall display only a static image consisting of a message and background, including all graphics. The static image shall not change more than once every five seconds and the message in its entirety must change within one second. No portion of the message shall blink or flash.



Sign Placement

All permitted signs are prohibited from being placed on sidewalks, public right of ways, easements, and utility poles.



For more information and permitting contact the Development Center at 485-3320 or visit www.victoriatx.org and click on Development Services



Code Enforcement
700 Main Center Suite 109
PO Box 1758
Victoria, TX 77901



Do you use banners, pennants, or other types of temporary signage to advertise your service or business?

If so, the City of Victoria Sign Ordinance has certain criteria that must be met.



Prohibited Signs

Portable Signs



Vehicle Signs



Utility Pole or Bandit Signs

A-frame or Sandwich Signs



Fence Signs



Allowable Signs With Permits



Temporary Banners / Inflatables

- ◆ Banner/Inflatable permit holders may install one temporary banner and an unlimited amount of inflatables on the lot.



- ◆ Permit is valid up to the end of the last day of the month in which it was issued.

Advertising Flags

- ◆ One advertising flag is allowed on each lot and must be located on the private property (out of the public ROW).



Pennants and Streamers

- ◆ The Pennants and Streamer Permits may be issued per year to the owner of the lot or each legal entity.
- ◆ Duration of Pennant and Streamer permits is 180 days.



Allowable Signs



Without Permits

Light Pole Mounted Banners

- ◆ May be mounted on light poles within off-street parking, maneuvering and display areas.
- ◆ Must be in a frame attached to a permanently affixed light pole.
- ◆ Must have a minimum clearance of 8 feet from the ground to the bottom of the banner and not exceed 3 feet in width or 8 feet in height.

